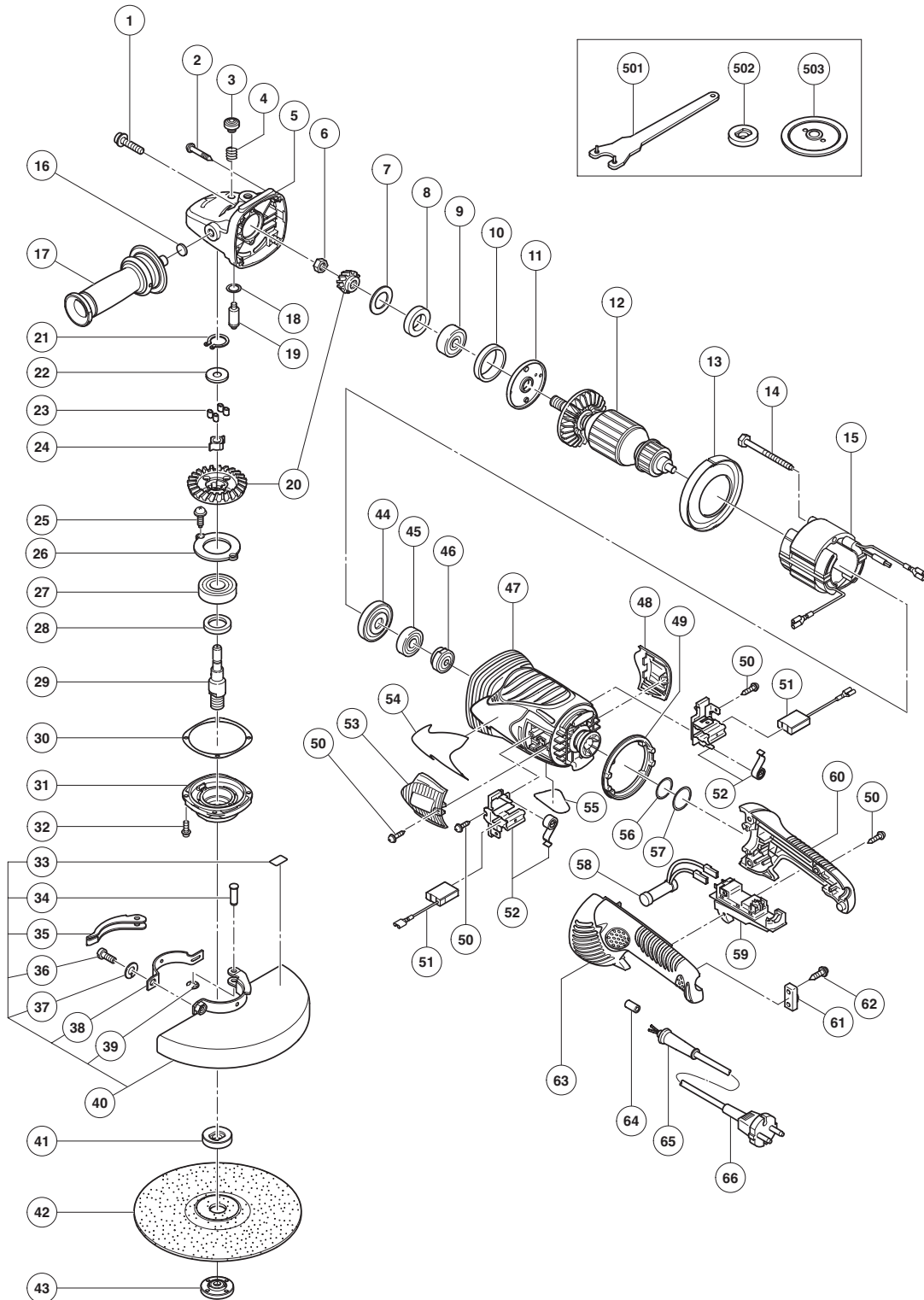


ELECTRIC TOOL PARTS LIST

■ DISC GRINDER
Model G 23UBY

2006 · 9 · 29

(E1)



PARTS

G 23UBY

ITEM NO.	CODE NO.	DESCRIPTION	NO. USED	REMARKS
1	984-509	SEAL LOCK HEX. SOCKET HD. BOLT M5X14	2	
2	323-209	TAPPING SCREW (W/FLANGE) D5X35 (BLACK)	4	
3	306-888	PUSHING BUTTON	1	
4	320-219	SPRING	1	
5	326-717	GEAR COVER ASS'Y	1	INCLUD. 3, 4, 16, 18, 19
6	320-226	SPECIAL NUT M10	1	
7	320-221	SEAL WASHER	1	
8	320-222	FELT PACKING	1	
9	630-1DD	BALL BEARING 6301DDCMPS2L	1	
10	994-208	RUBBER RING (B)	1	
11	320-220	BEARING COVER (A)	1	
* 12	360-594U	ARMATURE ASS'Y 110V-120V	1	INCLUD. 8, 9, 44, 45
* 12	360-777E	ARMATURE 220V-230V	1	
* 12	360-594F	ARMATURE 240V	1	
13	320-215	FAN GUIDE	1	
14	984-271	HEX. HD. TAPPING SCREW D5X75	2	
* 15	340-682C	STATOR 110V-120V	1	
* 15	340-682E	STATOR 220V-240V	1	
16	937-033	FELT WASHER	1	
17	322-411	SIDE HANDLE	1	
18	320-218	O-RING	1	
19	306-890	LOCK PIN	1	
20	326-718	GEAR AND PINION SET	1	
21	939-540	RETAINING RING FOR D10 SHAFT (10 PCS.)	1	
22	326-722	COUPLING COVER	1	
23	326-721	COUPLING DAMPER	4	
24	326-720	COUPLING	1	
25	949-236	MACHINE SCREW M5X10 (10 PCS.)	2	
26	326-723	BEARING COVER (B)	1	
27	620-2VV	BALL BEARING 6202VVCMP2L	1	
28	990-852	FELT PACKING (B)	1	
29	326-727	SPINDLE	1	
30	320-228	SEAL PLATE	1	
31	320-227	PACKING GLAND	1	
32	994-192	HEX. SOCKET HD. BOLT (W/FLANGE) M5X16	4	
33	311-492	LABEL	1	
34	321-546	SET PIN	1	
35	321-545	LEVER	1	
36	306-887	BOLT M8X22	1	
37	949-457	SPRING WASHER M8 (10 PCS.)	1	
38	321-544	SET PIECE	1	
39	673-489	RETAINING RING (E-TYPE) FOR D5 SHAFT	1	
40	321-547	WHEEL GUARD ASS'Y	1	INCLUD. 33-39
* 41	937-907Z	WHEEL WASHER (A)	1	
* 41	937-908Z	WHEEL WASHER (B)	1	FOR AUS
* 42	316-825	D. C. WHEELS 230MM A24R (25 PCS.)	1	FOR AUS
43	937-909Z	WHEEL NUT M14X2	1	
44	320-216	DUST SEAL	1	
45	600-0VV	BALL BEARING 6000VVCMP2L	1	
46	321-536	BEARING BUSHING	1	
47	326-712	HOUSING ASS'Y	1	INCLUD. 46

