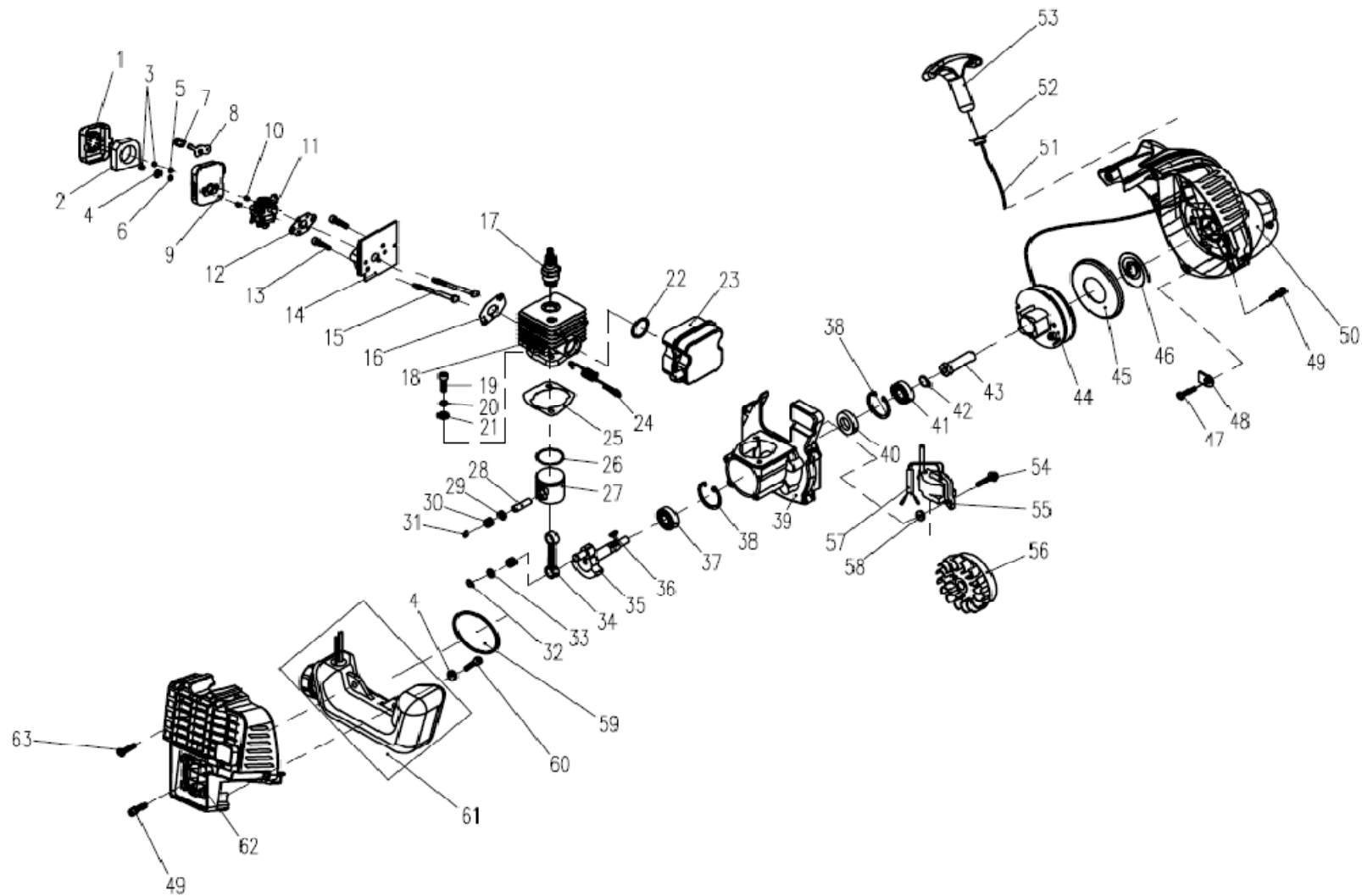
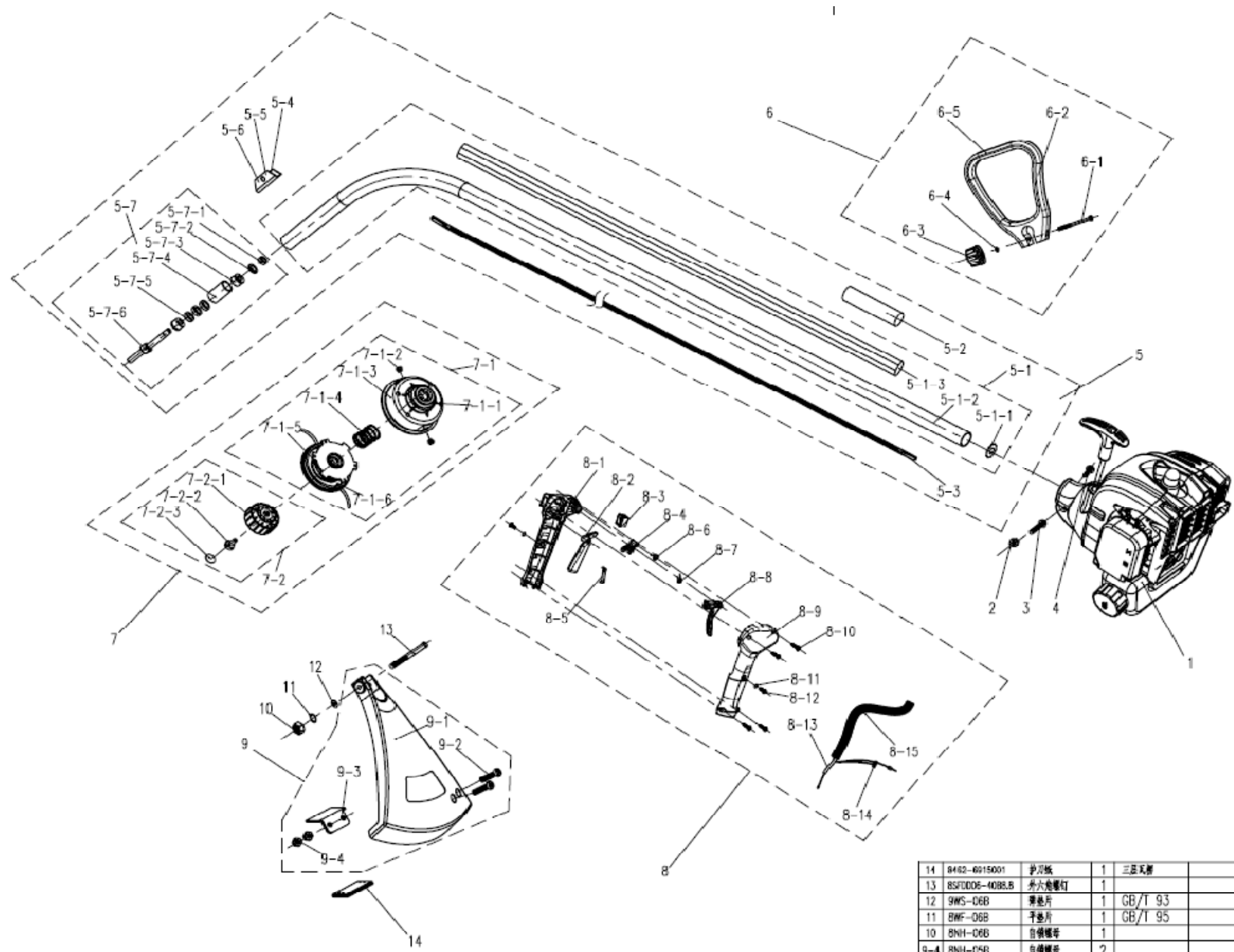


CHAMPION



No.	Mfg Part No.	Description	Part No.	Q'ty
1	1	air filter Cover	PR8020-983402	1
2	2	air filter sponge	PR8326-983401	1
3	3	nut	R9NA-05B	2
4	4	plain cushion	R9341-923002	3
5	5	cushion	R8WF-05B	1
6	6	srping	R9342-923001	1
7	7	choke rubber	PR9348-923002	1
8	8	choke	PR9181-923001	1
9	9	air fliter	PR8615-983401HY	1
10	10	inside bush	R9066-923002	2
11	11	carburetor	R8613-981101	1
12	12	gasket seal	PR8208-981001-01	1
13	13	socket head screw	R8SACN05-25B8.8	2
14	14	admitting pipe	PR8141-981101	1
15	15	hex head screw	R9206-923002-01	2
16	16	cylinder gasket seal	PR8208-981002-01	1
17	17	spark plug	R8611-981101	1
18	18	cylinder	R8601-981101	1
19	19	socket head screw	R8SACD06-20B8.8	2
20	20	gasket	R8WS-06B	2
21	21	plain cushion	R8WF-06B	2
22	22	gasket	PR8208-981102	1
23	23	muffler group	R8614-981101	1
24	24	muffler srping	R8342-981101	2
25	25	cylinder gasket	PR8208-981101	1
26	26	piston ring	R8604-981001	1
27	27	piston	R8603-981101	1
28	28	piston pin	R8605-981101	1
29	29	thrust washer	R8202-981001	2
30	30	quill bearing	R8BE-110809-WG	2
31	31	retaining ring	R8201-981101	2
32	32	gasket	R8201-981102	1
33	33	connecting rod gaske	R8321-981101	1
34	34	connecting rod	R8087-981101	1
35	35	crank shaft group	R8440-981101	1
36	36	woodruff key	R8205-981101	1
37	37	bearing	R8BC-122808-WG	1
38	38	gasket	R8CA-28B	2
39	39	crank shaft	R8602-981101	1
40	40	TC oil seal	PR9200-923001	1
41	41	bearing 6001Z	RBC-281208-ST	1

42	42	jump ring	R8CC-12B	1	
43	43	connection shaft	R8081-981101	1	
44	44	wire reel	PR9121-923001-01	1	
45	45	coil spring bowl	R9623-923001	1	
46	46	coil spring	R9617-923001	1	
47	47	self-tapping screw	R8SJAB40-12B	3	
48	48	retainer ring	R8181-981101	3	
49	49	socket head screw	R8SACP05-20D8.8	8	
50	50	starter guard shield	PR8024-981101EA	1	
51	51	starter cord	PR9616-923001	1	
52	52	rivet	R9213-923001	1	
53	53	starter handle	PR9003-923001	1	
54	54	socket head screw	R8SACN04-30B8.8	2	
55	55	igniter	R8610-981101	1	
56	56	flywheel gear	R8609-981101	1	
57	57	extinction wire	PR9413-923003	1	
58	58	gasket	R8348-981101	2	
59	59	seal	PR8208-981103	1	
60	60	socket head screw	R8SACD05-20D8.8	2	
61	61	oil tank assy	PR8440-981102	1	
62	62	aft closure	PR8004-981101	1	
63	63	screw	PR8347-981101	3	



14	8462-4015001	护罩板	1	三星叉牌		
13	BSFD006-4088.B	外六角螺钉	1			
12	9MS-06B	摩擦片	1	GB/T 93		
11	8MF-06B	摩擦片	1	GB/T 95		
10	8NH-06B	自锁螺母	1			
9-4	8NH-05B	自锁螺母	2			通用Y6

No.	Mfg Part No	part No.		Q'ty	
1	1		Engine	1	
2	2	R8SJAB40-16B	screw	1	
3	3	R8SACP05-20D8.8	screw	1	
4	4	R8SDAA50-12B	screw	1	
5	5	R8440-921201	shaft assy	1	
6	5-1	R8440-921203	shaft group	1	
7	5-1-1	R8201-691101	retaining ring	1	
8	5-1-2	R8061-921201	shaft	1	
9	5-1-3	PR8331-921201	bushing	1	
10	5-2	PR9330-903101	sponge sleeve	1	
11	5-3	R9089-921101	flexible shaft	1	
12	5-4	R9RJ04-08S	stainless rivet	1	
13	5-5	R9RJ04-06D	rivet	1	
14	5-6	R8291-923101	fix stand	1	
15	5-7	PR9440-923136	contract group	1	
16	5-7-1	R9334-923103	flexible shaft ring	1	
17	5-7-2	R9202-923101	friction washer	1	
18	5-7-3	R9211-921101	bearing	2	
19	5-7-4	R9334-921102	muff	1	
20	5-7-5	PR9208-921101	washer	3	
21	5-7-6	R9085-923101	shaft connection	1	
22	6	PR8440-691104	D handle group	1	
23	6-1	R8SFDD06-65B8.8	screw	1	
24	6-2	PR8003-522202	side handle	1	
25	6-3	PR8313-522201	knob	1	
26	6-4	R8NA-06B-1005	screw	1	
27	6-5	PR8020-522201	auxiliary handle cover	1	
28	7	PR8440-923140	spool group	1	
29	7-1	PR8440-923119	spool assy	1	
30	7-1-1	PR9331-923101	spool sleeve	1	
31	7-1-2	R9213-923101	hole	2	
32	7-1-3	PR9140-923101-01	spool seat	1	
33	7-1-4	R9342-923101	spring	1	
34	7-1-5	PR9370-923101	Nylon line	4,5	
35	7-1-6		winding assy	1	
36	7-1-6-1		winding cover	1	
37	7-1-6-2		winding	1	

38	7-1-6-3	PR8139-923101	fix bowl	1	
39	7-2	PR9440-923109	knob assy	1	
40	7-2-1	PR8313-923101	knob	1	
41	7-2-2	R9206-923101-01	screw	1	
42	7-2-3	R9025-923101	knob cover	1	
43	8	PR8440-921202	throttle handle assy	1	
44	8-1	PR8001-921202	right handle	1	
45	8-2	PR8087-921201	release shaft	1	
46	8-3	PR9042-923107	switch	1	
47	8-4	PR8301-921201	release block	1	
48	8-5	R8323-921201	spring leaf	1	
49	8-6	R8342-921201	trigger spring	1	
50	8-7	R8342-921202	spring	1	
51	8-8	PR8044-921201	throttle trigger	1	
52	8-9	PR8001-921201	left handle	1	
53	8-10	R8SNAB30-12B	screw	4	
54	8-11	R8WF-05B	gasket	2	
55	8-12	R8SDAA50-08B	screw	2	
56	8-13	R8413-921201	throttle coil	1	
57	8-14	R8413-921202	extinction coil	1	
58	8-15	PR9060-923101	wave pipe	1	
59	9	PR9440-923144	protection cover	1	
60	9-1	PR9185-923102	protection cover	1	
61	9-2	R8SJGD05-16B8.8	screw	2	
62	9-3	R9231-923101	blade	1	
63	9-4	R8NH-05B	nut	2	
64	10	R8NH-06B	nut	1	
65	11	R8WF-06B	gasket	1	
66	12	R9WS-06B	gasket	1	
67	13	R8SFDD06-40B8.8	screw	1	
68	14	PR8462-691501	paper protector	1	